



BLR – Bollard Round
LED 15 W
Metal Halide Pulse Start 35 - 100 W
High Pressure Sodium 35 - 100 W
Fluorescent Quad Tube 26 - 42 W



DESCRIPTION

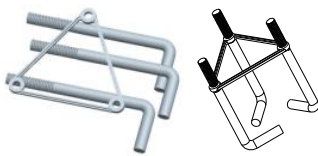
The BLR series is an aesthetic and architectural series of round bollards for up to LED 15W lamps, HID 100W lamps or Fluorescent quad tube 1 x 42W lamp applications.
 U.L. listed for wet locations.

APPLICATION

Suitable for lighting of walkways, pathways, plazas, pedestrian areas and near building entrances where an aesthetic clean look is desired.

MOUNTING

Mounting bracket with anchor bolts included.



HOUSING

The main shaft is extruded aluminum and the top section is made of high pressure die cast aluminum. Available in Black (BLK), White (WHT) or Architectural Bronze (BRZ) polyester powder coat paint finishes for lasting corrosion resistance. Recessed vandal resistant screws provide a clean finished look.

Available in standard 42" height for Dome Top versions and 41" height for Flat Top versions. Can be custom manufactured to specified height

All versions include a clear polycarbonate lens with internal optics.

OPTICAL

Available in four versions.
 IR – Internal Reflector (adjustable)
 IL – Internal Louver
 G3 – Glass with type 3 distribution
 G5 – Glass with type 5 distribution
 IR and IL versions are Dark Sky compliant.

LED DATA

LED Wattage = 15 W
 Total Wattage = 17 W

LED Lumens = 2089 lumens
 Delivered Lumens = 1384 lumens for IR version. Varies for other optical versions.

CRI = 83
 Color Temperature = 5000 K

Input Voltage = 120–277 V, 50/60 Hz

CATALOG NUMBER LOGIC

<u>BLR-</u>	<u>MP</u>	<u>100-</u>	<u>MT-</u>	<u>427</u>	<u>DT</u>	<u>IR-</u>	<u>L</u>
Product	Lamp Type	Lamp Wattage	Voltage	Height, Dia	Top	Optical	Lamp
BLR = Bollard Round	LD = LED MP = Metal Halide Pulse Start HP = High Pressure Sodium FL = Fluorescent quad tube	(LED) 15 (MP) 35, 50, 70, 100 (HPS) 35, 50, 70, 100 (FL) 26 = 26W 32 = 32W 42 = 42W	MT = Multi Tap 120/208/240/277V DT = Dual Tap 120/277V 120V = 120V UV = Universal Voltage (120–277 V)	Dome Top 427 = 42" x 7" Flat Top 417 = 41" x 7"	DT = Dome Top FT = Flat Top	IR = Internal Refl. IL = Internal Louvers G3 = Glass Type 3 G5 = Glass Type 5	L = Lamp Included